

# Jim Hoback's Rail Manipulation Devices

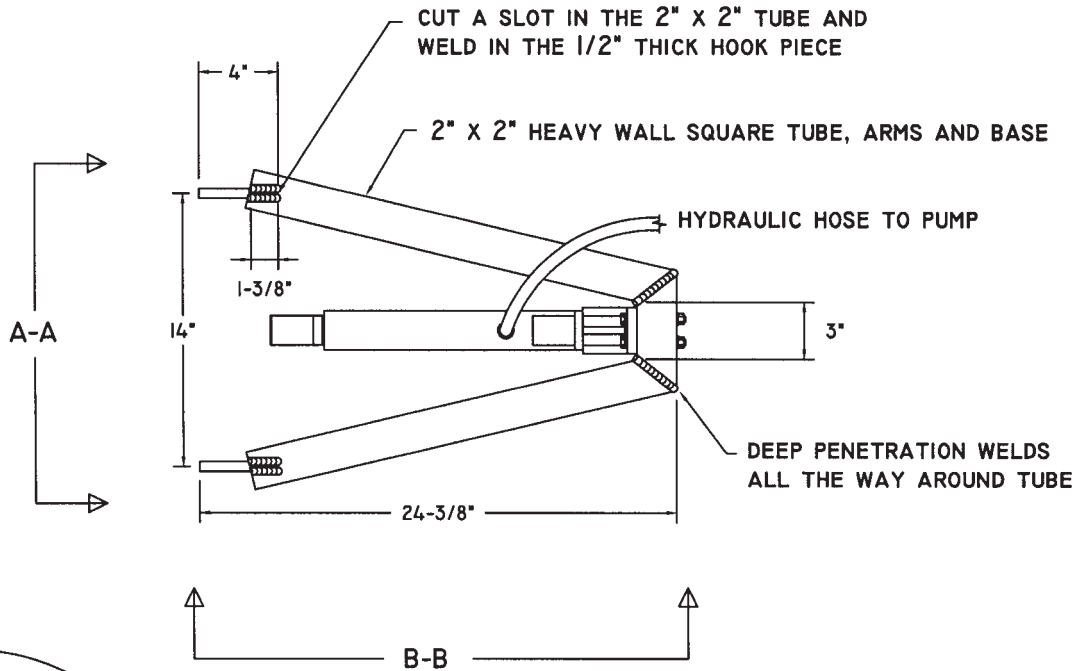
While these drawings have been in print before, some of our readers may not have seen them. We are glad that Jim has allowed us to publish them in GSQ.

These are the tools that he used to build and maintain the Sonora Short Line RR (12", formerly of

Tuolumne, California). They are practical, and they are durable.

Perhaps most importantly, they don't weigh as much as some of the cast behemoths built for working heavier industrial rail.

## HYDRAULIC RAIL BENDER



NOTE: ALL DIMENSIONS ARE NOMINAL AND MAY VARY DEPENDING ON THE DIMENSIONS OF YOUR HYDRAULIC RAM, ITS ATTACHMENTS, AND YOUR RAIL SIZE.

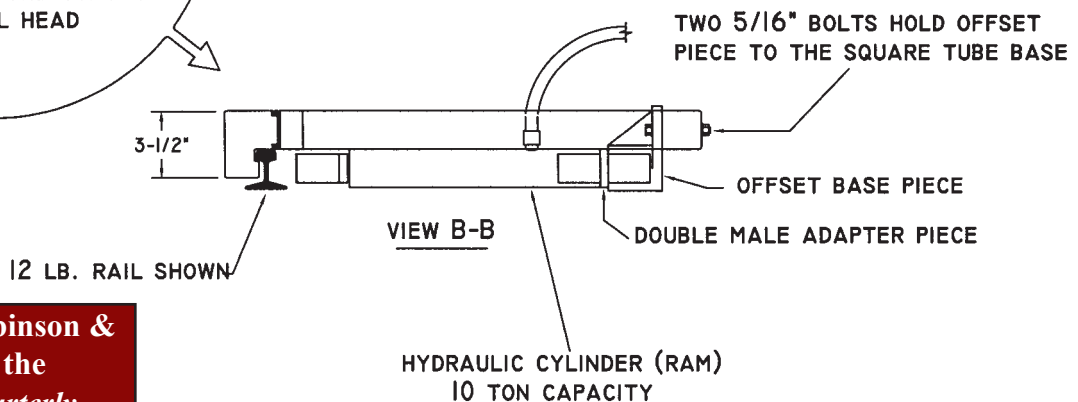
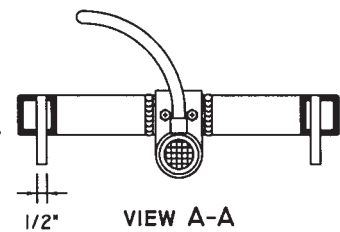


FIGURE I

J. HOBACK 2-96

Compliments of Robinson & Associates and the Grand Scales Quarterly  
530-527-0141  
www.grandscales.com

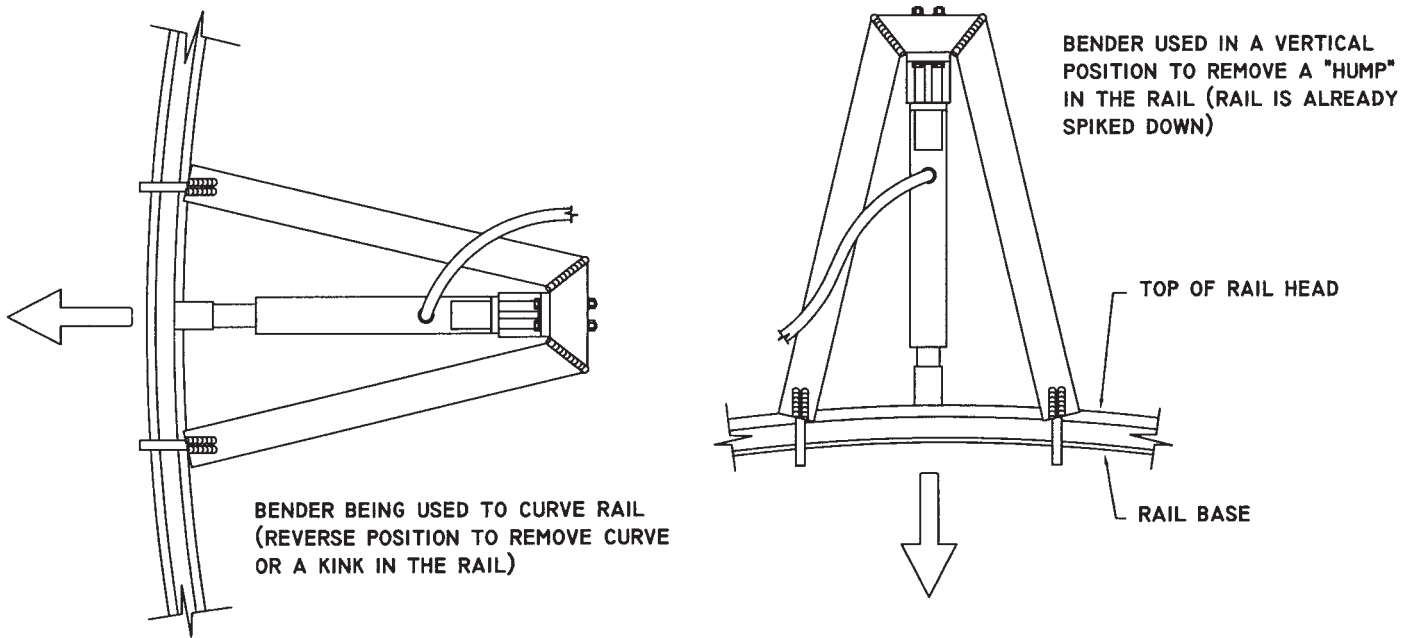
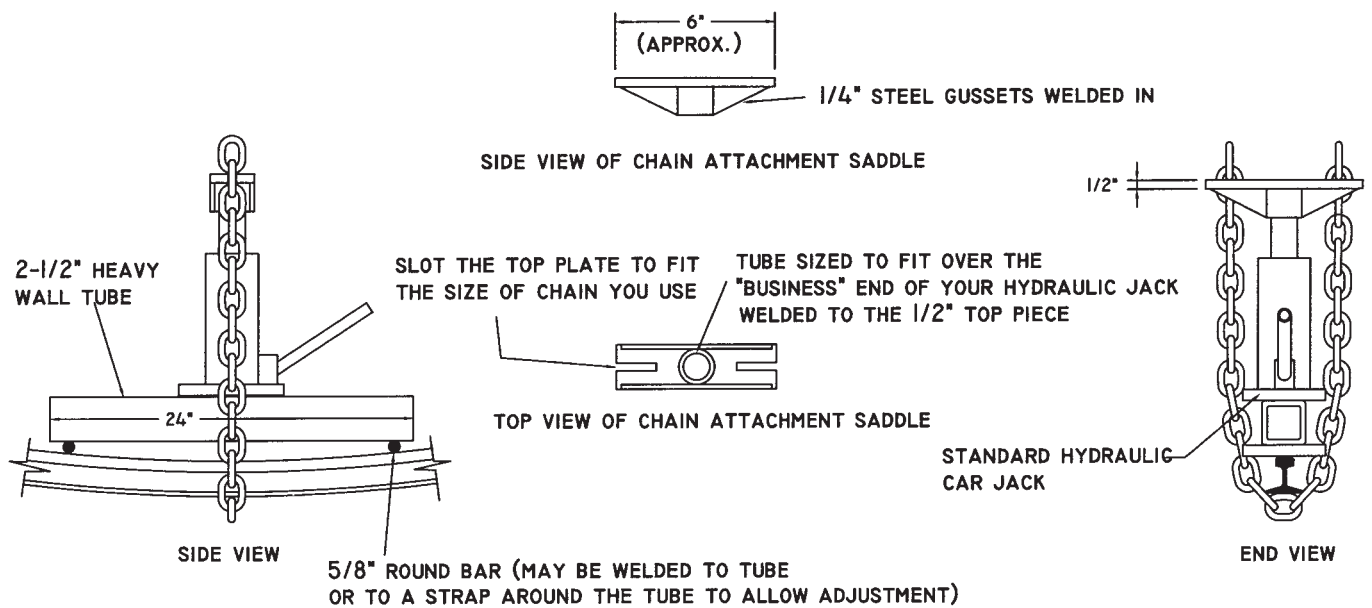


FIGURE 2



"DIP LIFTER" THE ABOVE SETUP IS USED TO LIFT DIPS IN THE RAIL WHEN THE RAIL IS ALREADY SPIKED DOWN. IT USES A STANDARD HYDRAULIC CAR JACK AS A POWER SOURCE. THE JACK CAN BE BOLTED TO THE SQUARE TUBE. THE HYDRAULIC RAM USED ON THE RAIL BENDER CAN BE USED ON THIS LIFTER BY WELDING A SHORT RECEIVER TUBE ON THE SQUARE TUBE AND USING THE DOUBLE MALE ADAPTER PIECE TO MAKE THE CONNECTION.

FIGURE 3

J. HOBACK 2-96